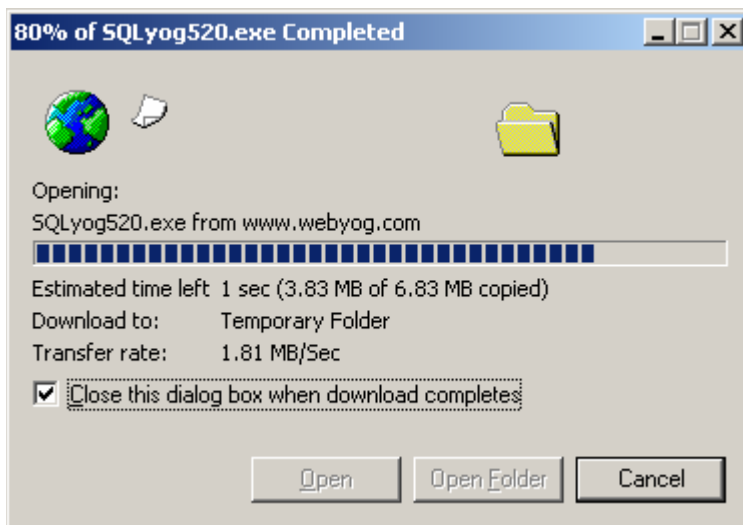
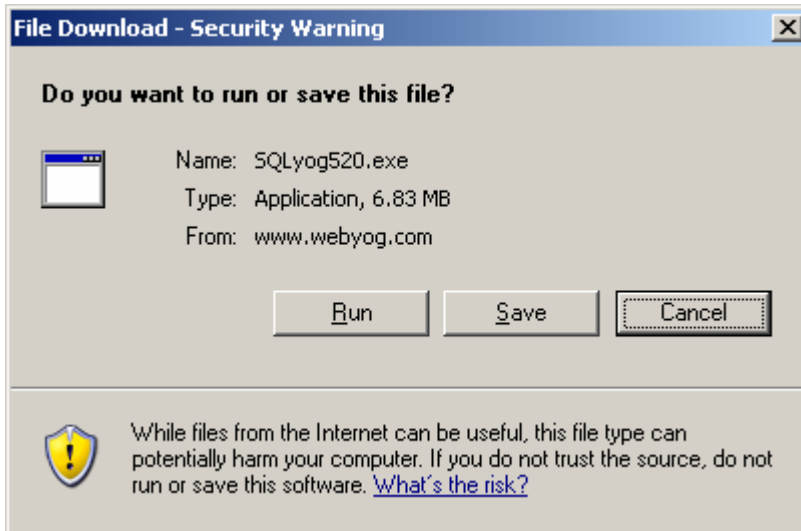


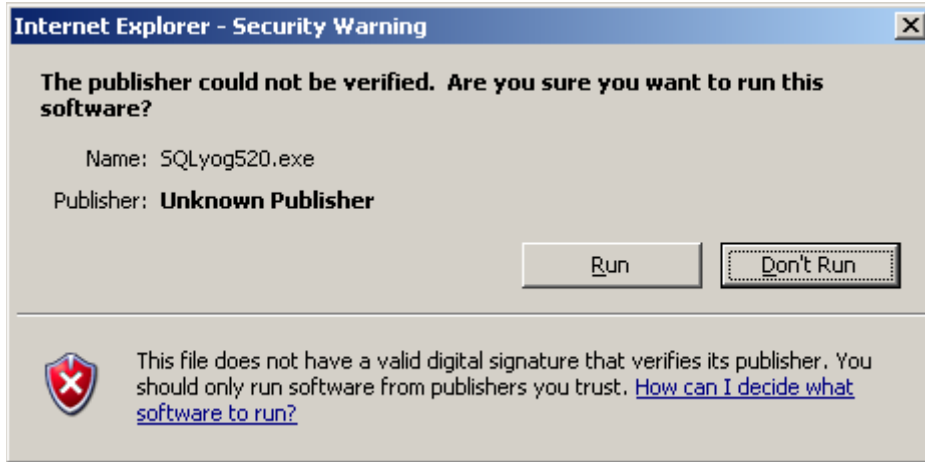
How to backup your MySQL Database

Download and install “SQLyog Community Edition 5.20 (Stable)” under “**Community Edition**” “**Binaries**” from the following URL: <http://webyog.com/en/downloads.php>

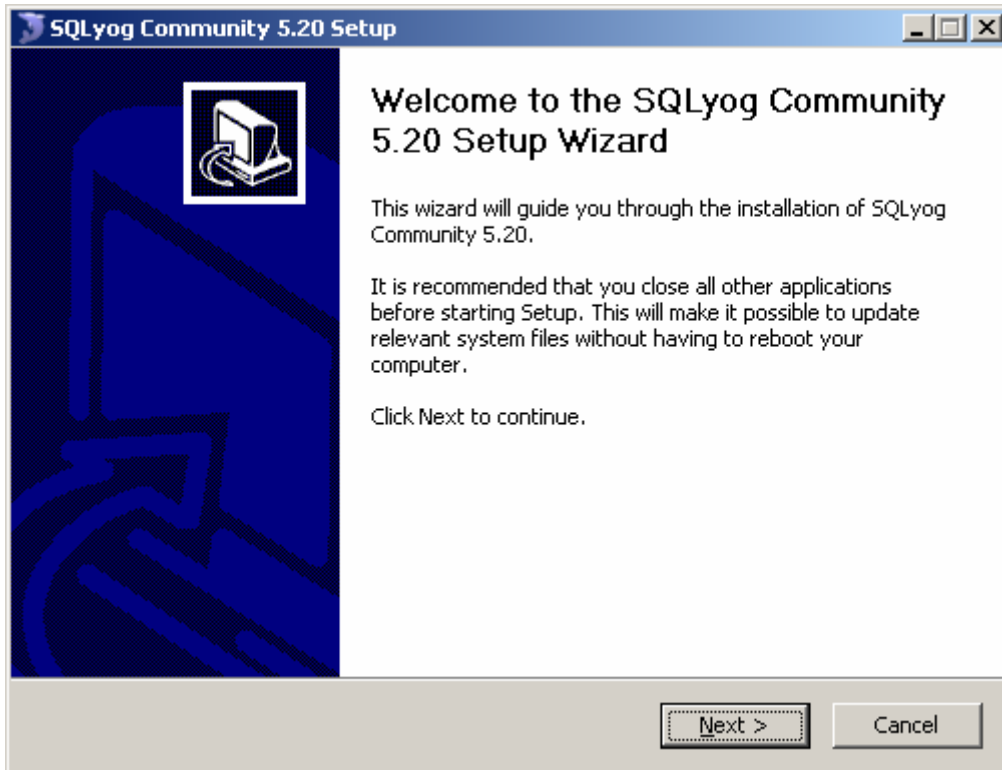
Click “**Run**” to begin the installation.



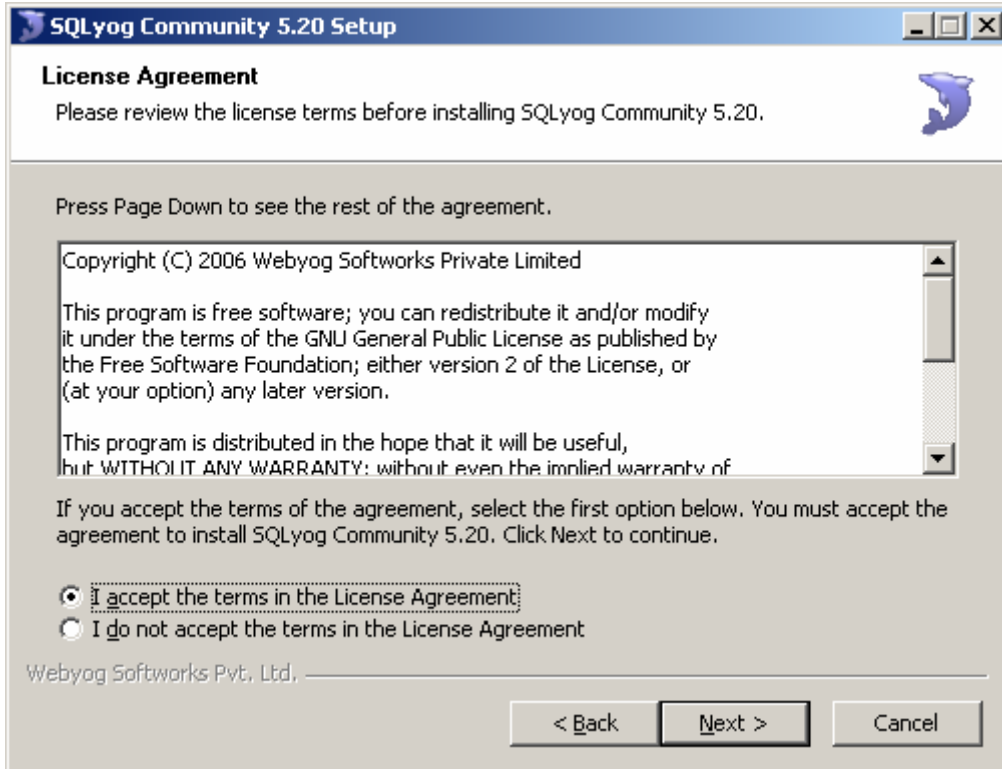
Click **“Run”** to bypass the “Internet Explorer - Security Warning”



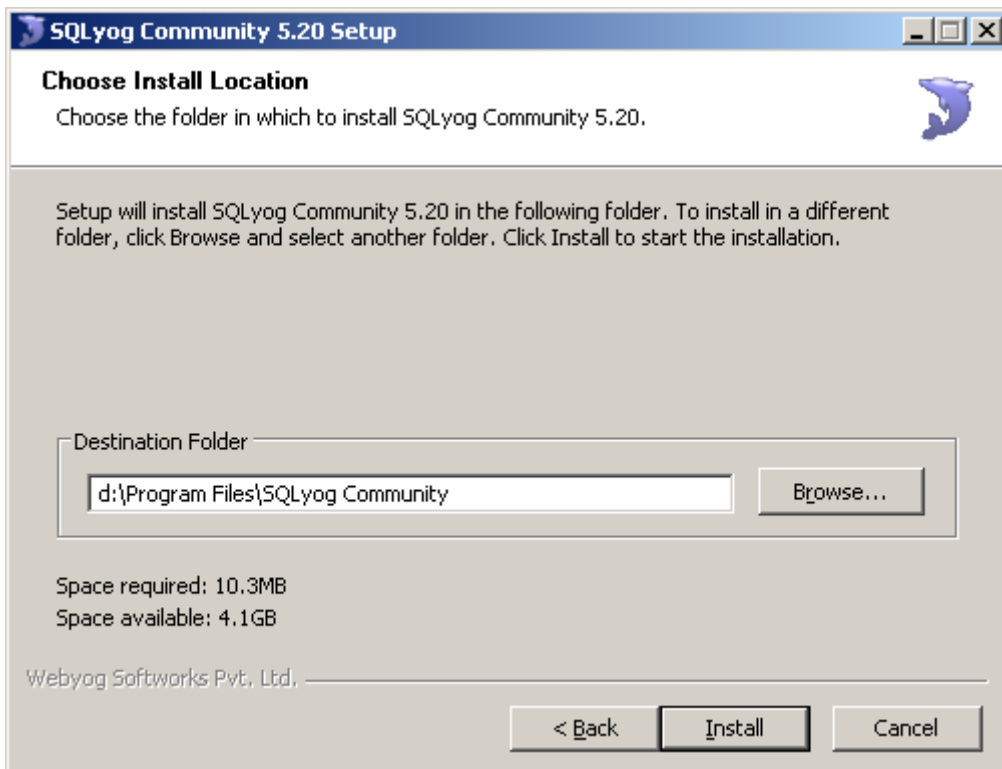
Click **“Next”** to begin setup.



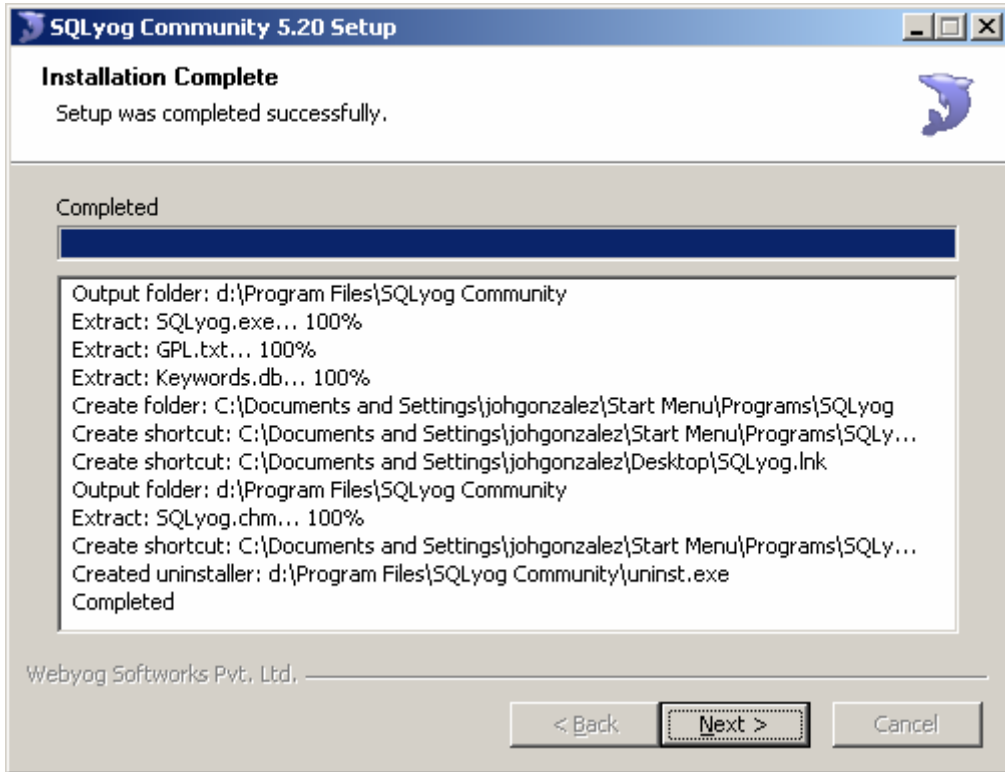
Click the radio button to “Accept the terms in the License Agreement” and click “Next”.



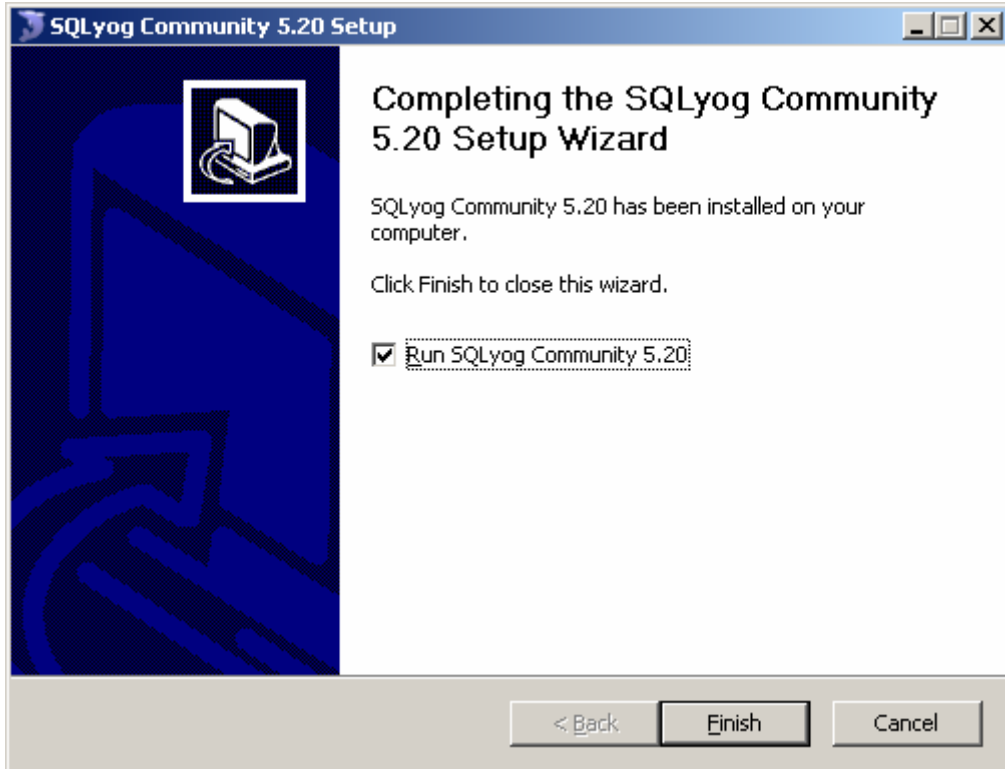
Choose a location to install the software, and click “Install”.



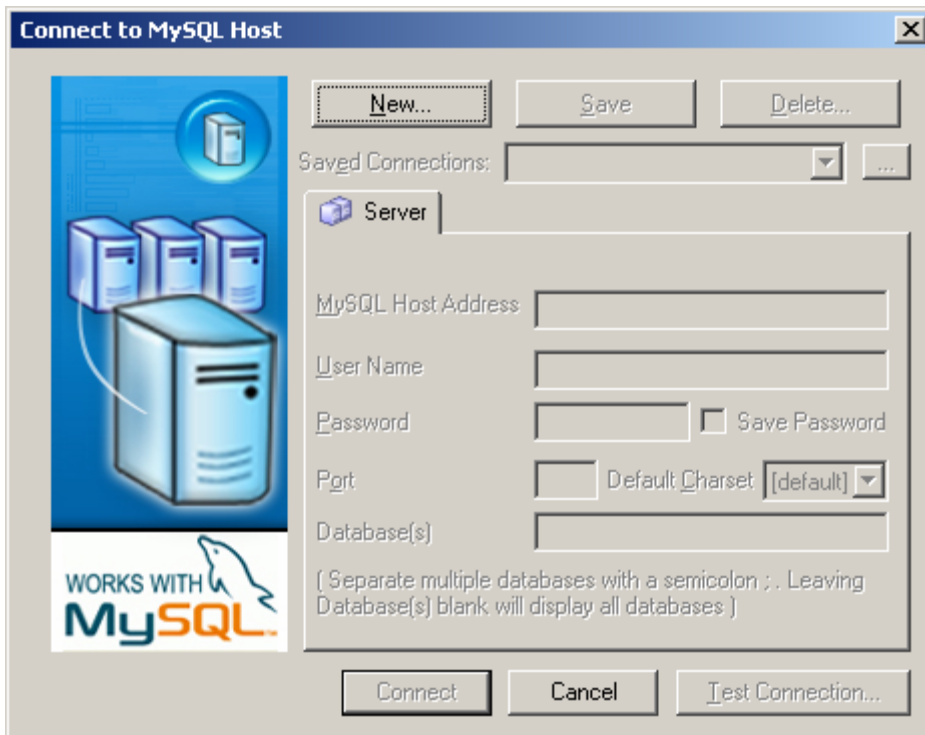
Click “Next” after Installation has completed.



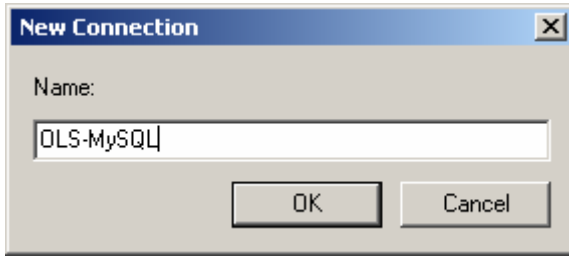
Click “**Finish**” to run SQLyog.



Click “**New**” to setup a connection to your MySQL database.



Enter a descriptive name to identify your database connection, and then click “**OK**”.



Enter your account information:

MySQL Host Address: **cgi.stu.aii.edu**

User Name: *Your OLS user id*

Password: *Your OLS password*

**All other information can be left as the default.*

Connect to MySQL Host

New... Save Delete...

Saved Connections: OLS-MySQL ...

Server

MySQL Host Address: cgi.stu.aii.edu

User Name: mt383

Password: [masked] Save Password

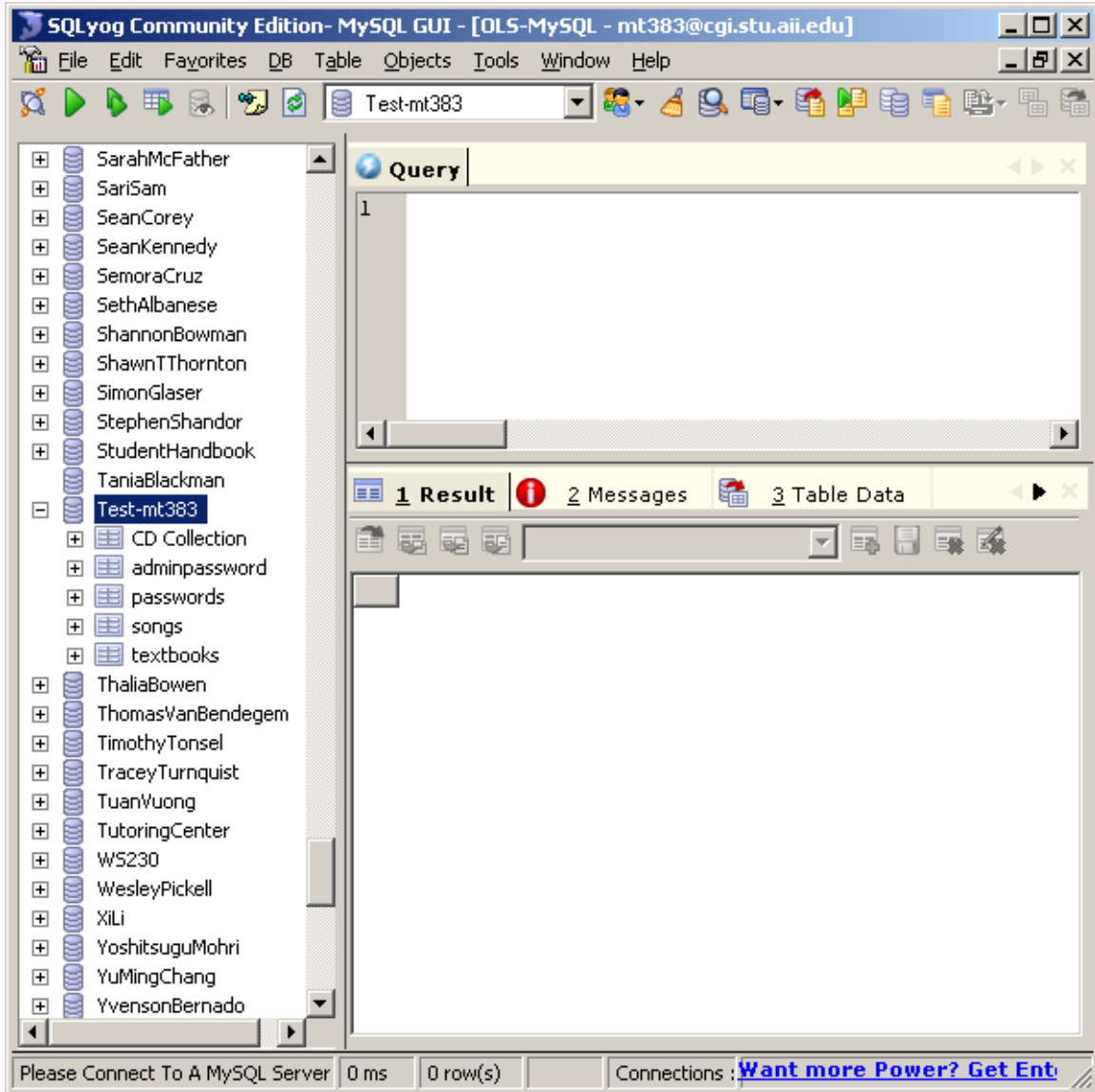
Port: 3306 Default Charset: [default]

Database(s):

(Separate multiple databases with a semicolon ; . Leaving Database(s) blank will display all databases)

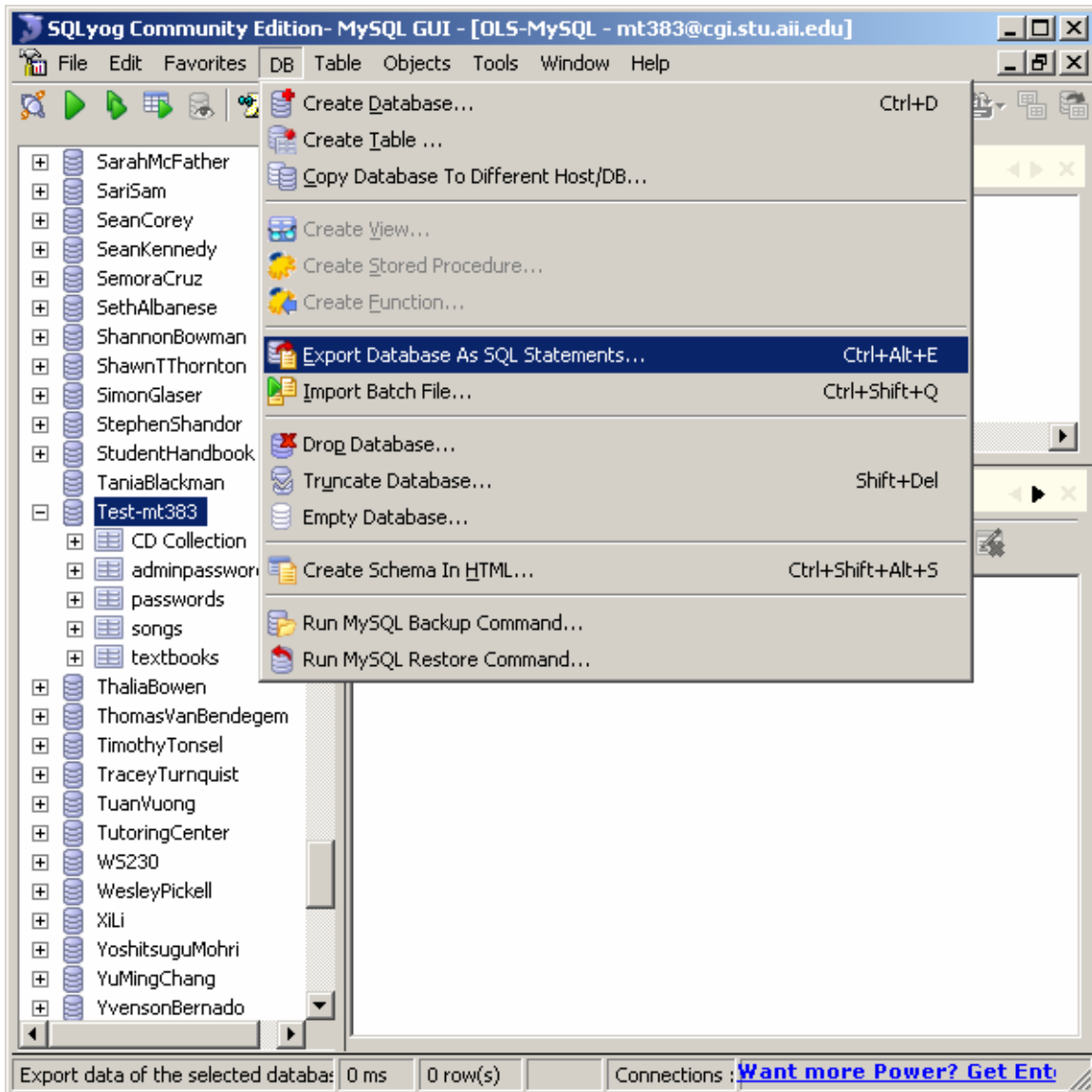
Connect Cancel Test Connection...

Once you are connected, scroll down until you find your database.

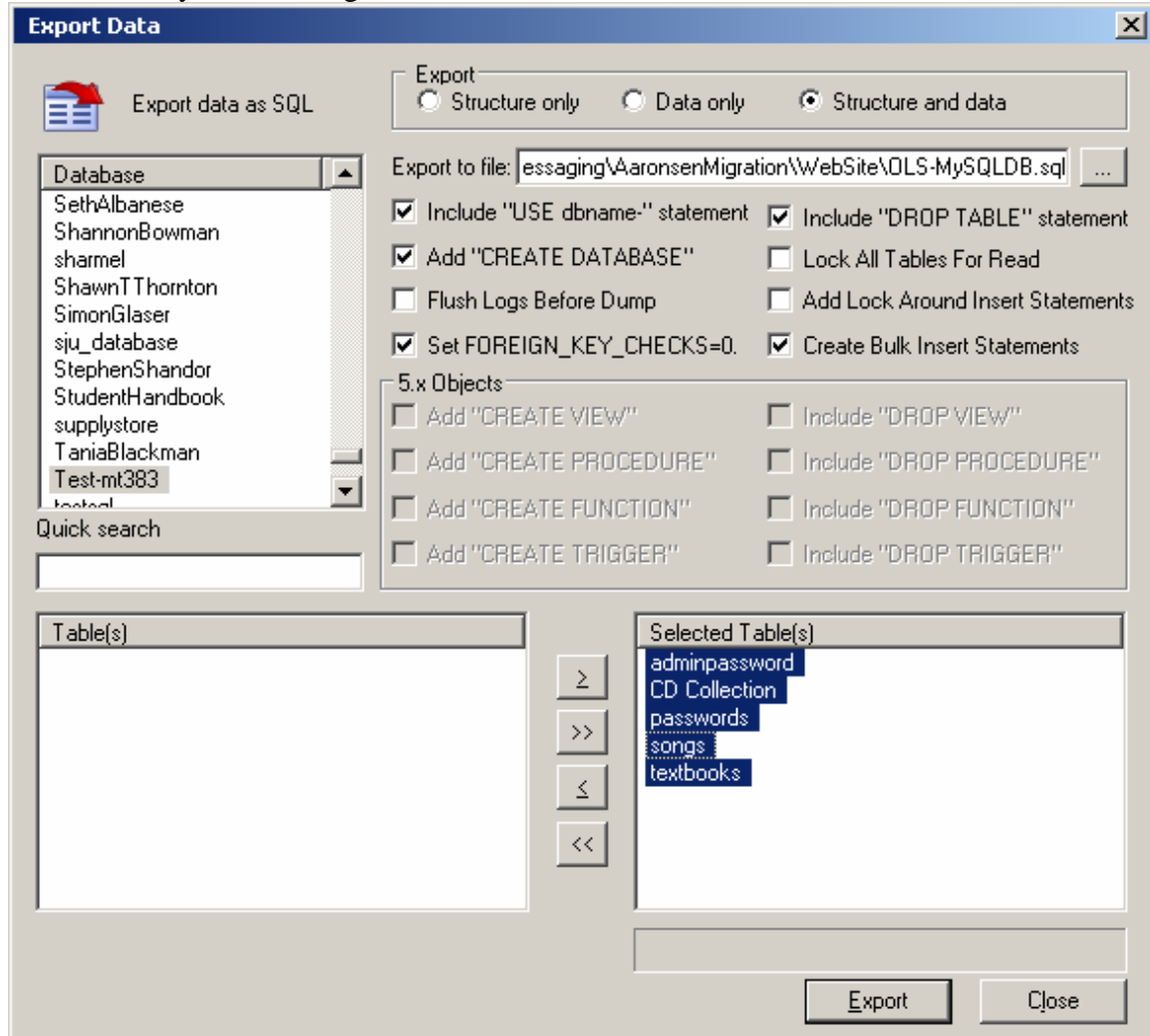


Choose the option to Export your database as SQL Statements.

Choose **DB** → **Export Database As SQL Statements...** (From the Menu) or
“**Ctrl + Alt + E**” (Keyboard Combination)



Enter a filename to Export your databases to, and select all of the tables by holding down the “Ctrl” key and clicking each table, until all are selected.



Click **“Export”** to begin the export. Make sure the Export completes successfully.

